

MiMA
Min Space,Max Performance

MiMA
Min Space,Max Performance



Multi-Directional Forklift/ 4-Directional Forklift Long material handling solution



BANYITONG SCIENCE & TECHNOLOGY DEVELOPING CO.,LTD.

Add: Crossing of Dai he Road and Cailun Road,Hefei,China
Tel: +86 551 6219 3112
Fax: +86 551 6211 3877
Email: sales@mimachina.com
Website: www.mimaforklift.com



Website



You always handle long materials like this?



Not safe!

The length of the material is too long and the lifting height is too high, causing the goods to shake and be unstable. This will cause the goods to fall, causing property damage and even casualties.

Low efficiency!

This will cause the goods to fall, causing property damage and even casualties.

Low storage capacity!

This will cause the goods to fall, causing property damage and even casualties.



VNA Forklift-Long Material Handling-Heavy-Duty Handling-AGV Forklift Body

Multi-directional forklift for aluminum industry

MiMA Multi-Directional /4-Directional Forklift
Special Designed for Long Materials!

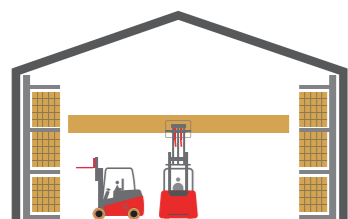
Safer, more efficient and higher storage capacity!



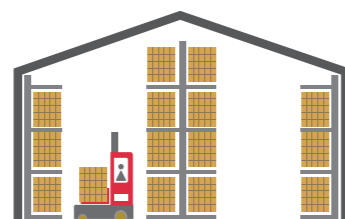
Multi-directional forklift for aluminum industry

Long Material Storage, Professional Solutions

MIMA electric forklifts proceed from improving the efficiency and safety of long material handling and improving the use of warehousing utilization, and developed a professional multi directional/ 4 directional forklift to solve the pain points of industries such as difficulty in long material transportation, storage difficulty, and high warehouse utilization rate. The multi directional / 4 directional forklift has a multi -directional driving function. The use multi directional/ 4 directional forklift to carry long materials, the operation is more flexible, the process is more convenient. The operator has a good vision and safer, which greatly improves the efficiency of long material handling warehousing.



Without multi-directional/4 directional forklift



With multi-directional/4 directional forklift



MQ25 Multi-Directional



Safety

Flexible driving and good vision, making you move safe in warehouse, reduce product damage risk.



Warehousing

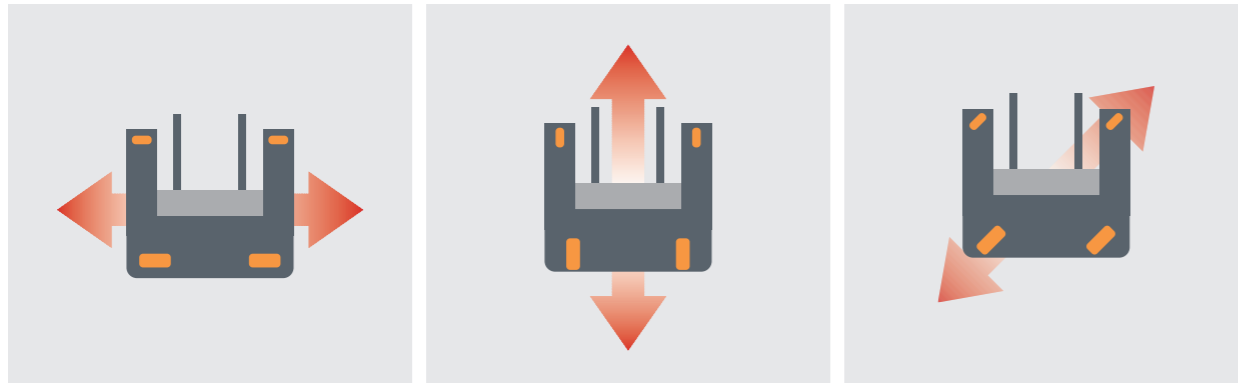
Vehicles can travel in multiple directions, reduce safety operation space, smaller aisle width, increase storage space.



Efficiency

Special designed for long material, multi directional /4 directional travelling, indoor and outdoor using, suitable for complicated conditions.

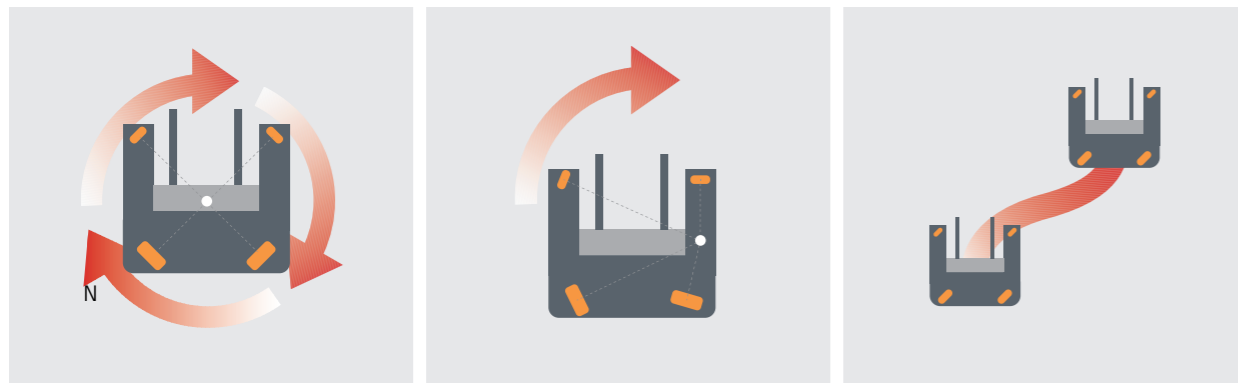
Flexible Driving Mode



Side travelling mode

Straight travelling mode

Diagonal travelling mode

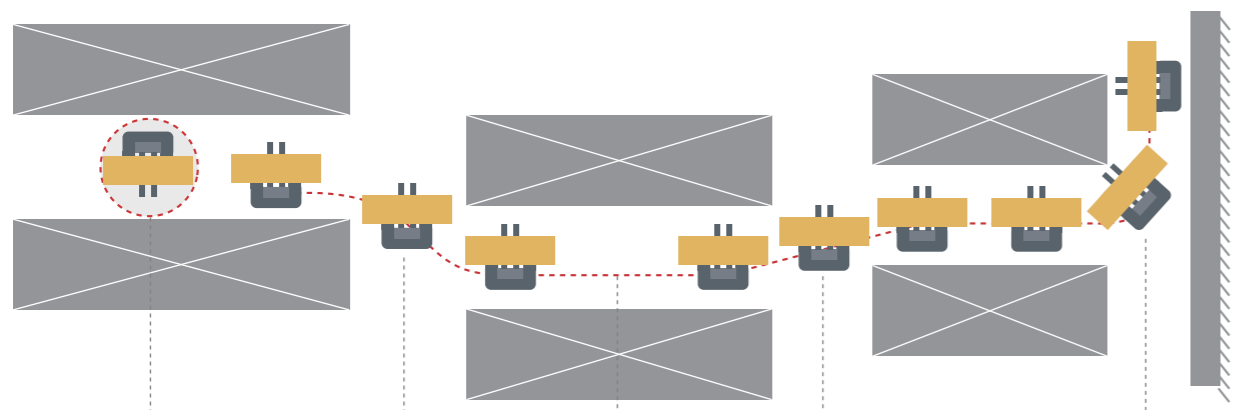


Neutral turn mode

Min right angle turning

Diagonal direction adjustable

Suitable for Complex Environment



Neutral turn rotating

Diagonal direction adjustable

Side travelling

Diagonal travelling

Min right angle turning

Note: MQB30 model only has straight travelling and side travelling mode, MQD30 has straight travelling, side travelling and neutral turn mode.

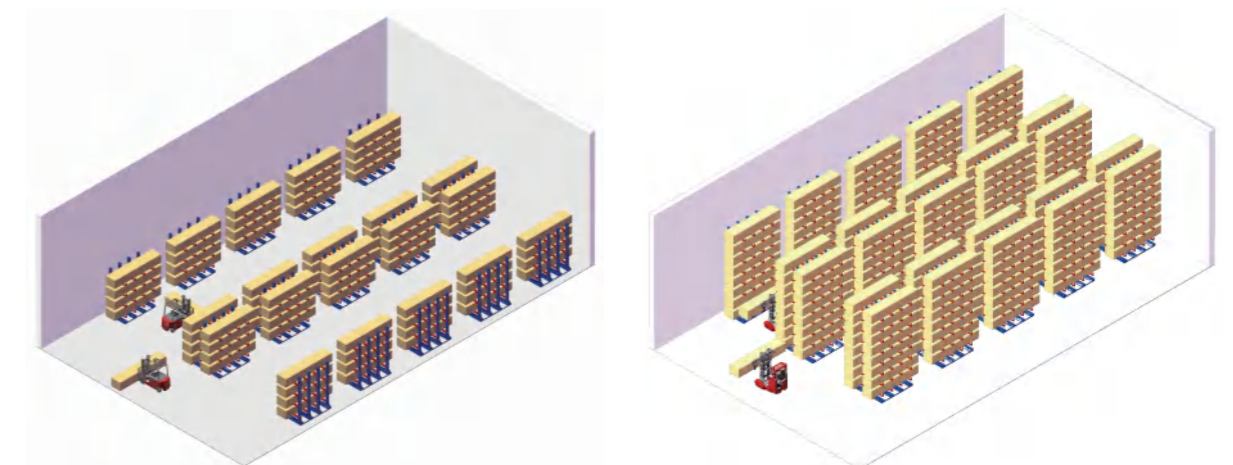
Very narrow aisle Multi-directional driving mode, the longer the material, the better the effect



High racks Compared with counterbalance forklift, rack height increase 60%.

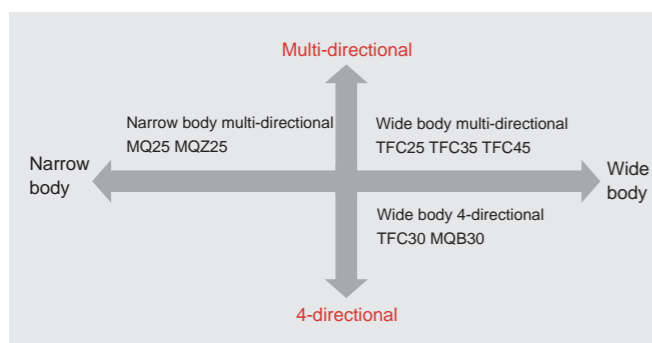


High storage capacity Aisle width reduce, rack height increase, improve available warehouse area, increase storage capacity.



Mode Choose

MIMA provide full range of multi- directional/ 4-directional forklift, can satisfy different working condition and requirements.



Narrow Body Multi-Directional Forklift Suitable max 8m material length



MQ25	Narrow body Stand-on multi-directional forklift
Rated capacity	2.5T
Drive direction	Multi-directional
Max lift height	8000mm
Operation mode	Stand-on



MQZ25	Narrow body Seated multi-directional forklift
Rated capacity	2.5T
Drive direction	Multi-directional
Max lift height	8000mm
Operation mode	Seated

Wide Body Multi-Directional Forklift suitable for max 15m material length



MQC25	Wide body Seated multi-directional forklift
Rated capacity	2.5T
Drive direction	Multi-directional
Max lift height	8000mm
Operation mode	Seated



MQC35	Wide body Seated multi-directional forklift
Rated capacity	3.5T
Drive direction	Multi-directional
Max lift height	8000mm
Operation mode	Seated



MQC45	Wide body Seated multi-directional forklift
Rated capacity	4.5T
Drive direction	Multi-directional
Max lift height	8000mm
Operation mode	Seated

Wide Body 4-Directional Forklift suitable for max 15m material length

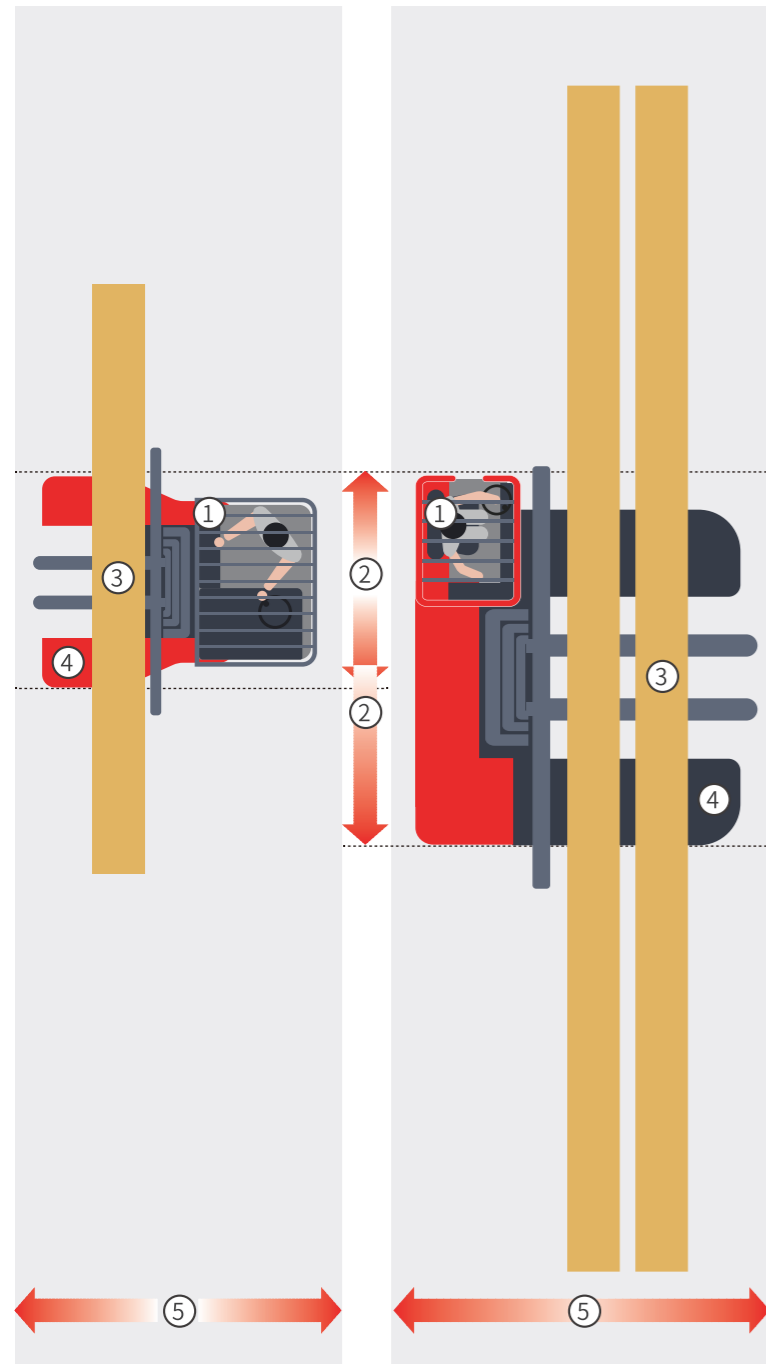


MQC30D	Wide body Seated multi-directional forklift
Rated capacity	3T
Drive direction	4-directional
Max lift height	8000mm
Operation mode	Seated



MQB30	Wide body Stand-on multi-directional forklift
Rated capacity	3T
Drive direction	4-directional
Max lift height	8000mm
Operation mode	Stand-on

Compared with other models



Narrow Body VS Wide Body

- 1 Cabin**
 The cabin of wide body forklift on the side, save the body space, and the driver has a better vision;

- 2 Overall width**
 The wide body forklift are wider, the material that can be carried is longer

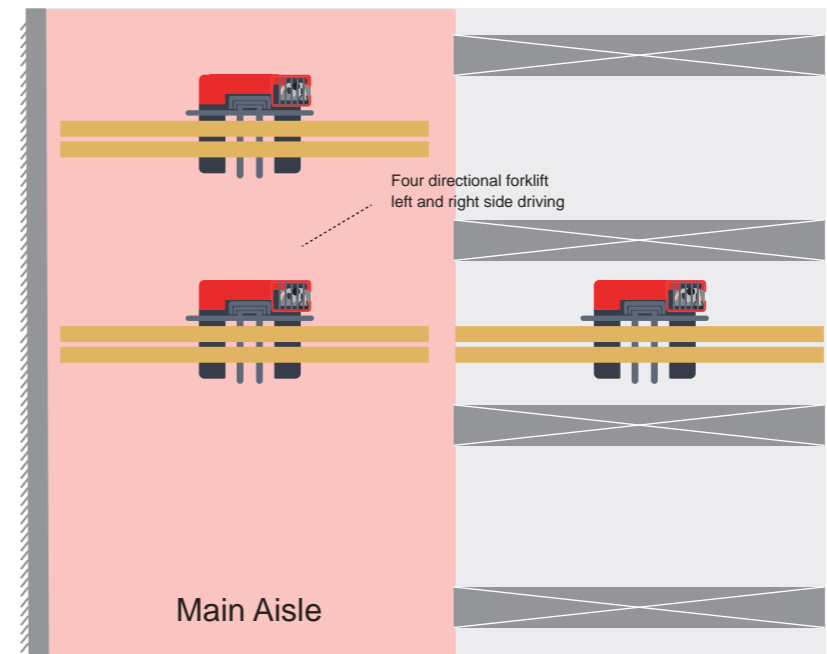
- 3 The length of longest material**
 The longest material length of the narrow body forklift is 8m
 The longest material length of the wide body forklift is 15m

- 4 Reach stroke / Platform length**
 Compared with narrow body forklift, the forward distance of wide body forklift is greatly increased, the platform is larger, and the material handling is more stable.

- 5 Side driving aisle distance**
 Both narrow body forklift and wide body forklift have very narrow side driving aisle distance, the wide body forklift just increases the load capacity and does not increase the side driving aisle distance

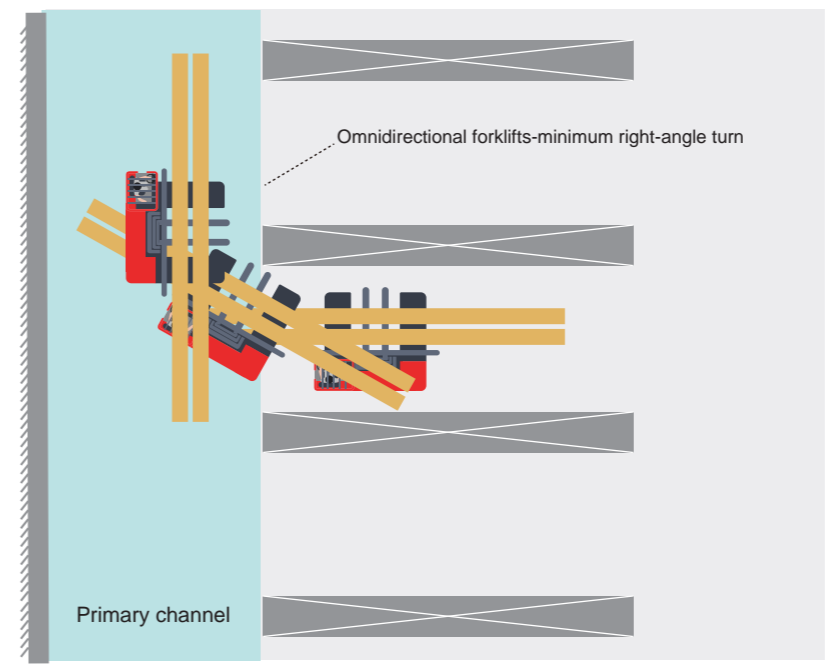
Narrow Body Model:
MQ25 MQZ25

Wide Body Model:
MQC25 MQC35 MQC45 MQC30D MQB30



Four directional VS Multi directional

The four directional forklift only has straight and side driving mode, and it requires a wider main aisle to adjust the body.



The multi directional forklift has multi driving modes, the minimum right angle turn requires a smaller main aisle distance, the body is more flexible, and the operation is more convenient.

Multi-directional Model:
MQ25 MQZ25 MQC25 MQC35 MQC45

4-directional Model:
MQC30D MQB30

Main parameter comparison

							
	MQ25	MQZ25	MQC25	MQC35	MQC45	MQC30D	MQB30
Side driving aisle	2800mm	2665mm	2900mm	2900mm	2900mm	2900mm	2700mm
Overall width	1595mm	1790mm	1850mm	2435mm	2439mm	2300mm	2225mm
Lifting Height	4500mm	8500mm	6000mm	6000mm	/	6000mm	5500mm
Fork Outside Width	244-772mm	400-2240mm	550-2100mm	610-2800mm	600-2900mm	560-2800mm	560-2800mm
Reach Stroke	783mm	740mm	900mm	1300mm	1300mm	1300mm	1180mm
Wheel	PU	PU	Rubber Solid Wheel	Rubber Solid Wheel	Rubber Solid Wheel	Rubber Solid Wheel	PU/Driver Wheel Rubber Solid Wheel
Drive	Single Drive 3-wheel	Single Drive 3-wheel	Dual Drive 4-wheel	Dual Drive 4-wheel	Dual Drive 4-wheel	Single Drive 4-wheel	Single Drive 4-wheel
Fork positioner	Customized	Standrd	Standrd	Standrd	Standrd	Standrd	Standrd
Wide fork carriage and four forks	Customized	Customized	Customized	Customized	Customized	Customized	Customized



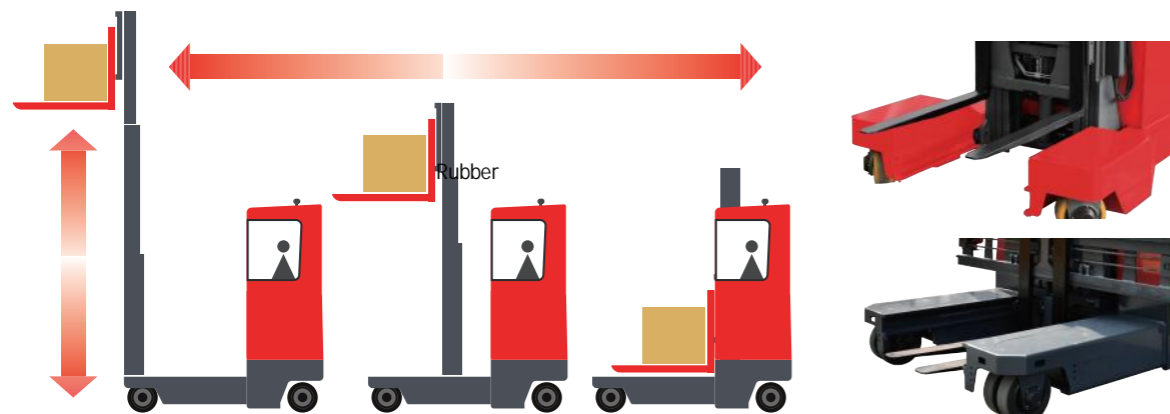
Forks



	Standard Forks	Fork Positioner	Four Forks	Wider Fork Carriage
Fork Outside Width	0.75m	2.2-2.8m	2.5m	Customized
Material Length	3m	8m (narrow body forklift) 15m (wide body forklift)	8m (narrow body forklift) 15m (wide body forklift)	Customized

When there is no locating fork hole, the width of the fork should be 1/3 ~ 1/5 of the length of the material. The longer the goods that need the wider the fork, so as to avoid the material unstable falling, causing material damage or loss weight. For details, please consult a professional sales engineer.

Mast+Integrated platform



The mast can be lifted and lowered + forward and backward, which is convenient to fork long materials. The lower center of gravity and wide platform provide a stable foundation for long material load transportation.

Wheel



PU wheel

Rubber solid wheel

Rubber solid wheel

The standard rubber wheel of the forklift will have different appearance according to the provision of the supplier, which will not affect the use effect.

Details of forklift



Mast forward moving device



High precision mast



Laser positioning



Laser HD camera



Overhead guard



Warning light



Wheel display function



Display *

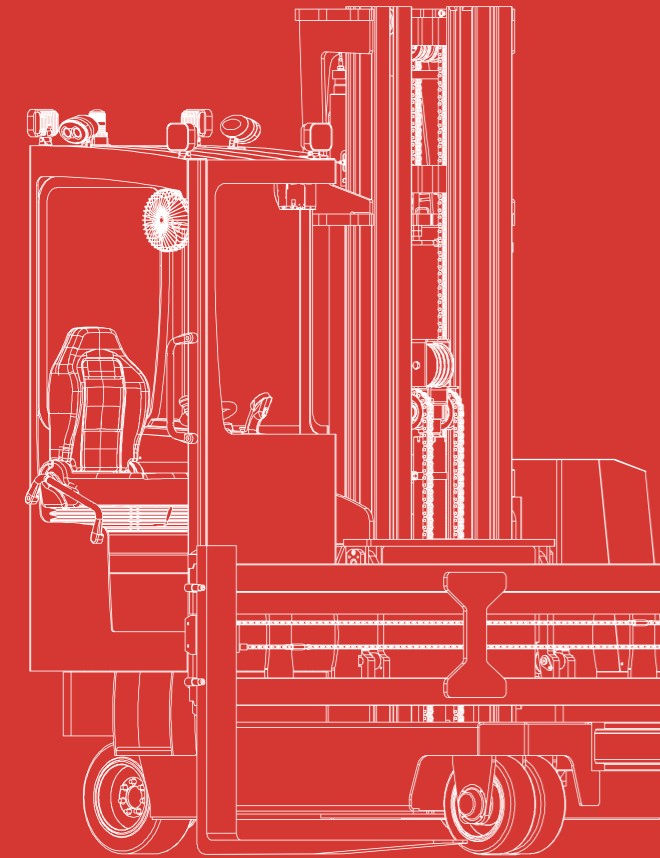
* Standard configuration for lifting height above 5m, optional for less than 5 m

- A forklift that can work seamlessly indoors and outdoors.
- With 13+ years experience of R & D and production multi directional and four directional forklifts .
- Delivered over 1,000 multi directional and four directional forklifts to global customers.
- Perfect sales service system, complete after -sales service, and worry -free.

Aluminium profile industry



Pipeline and wood industry



Textile industry

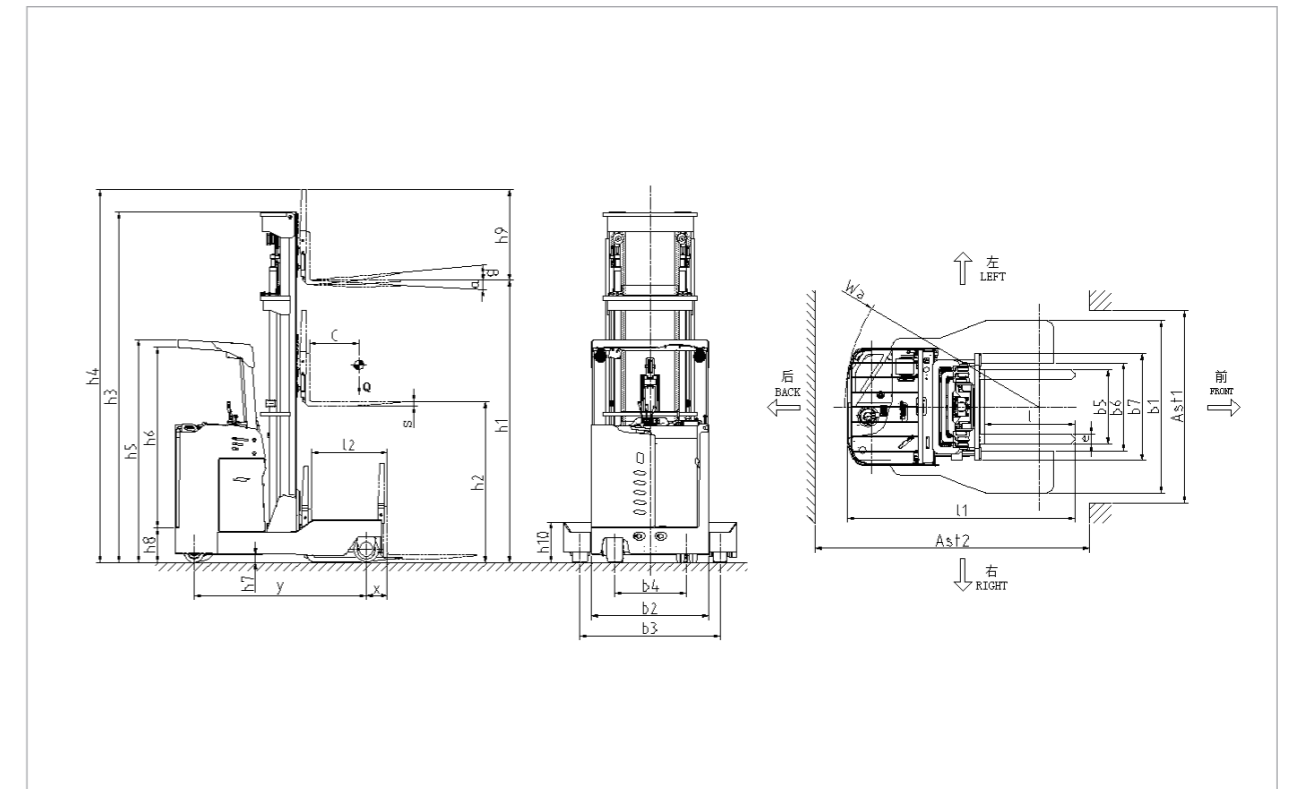


Long material industry

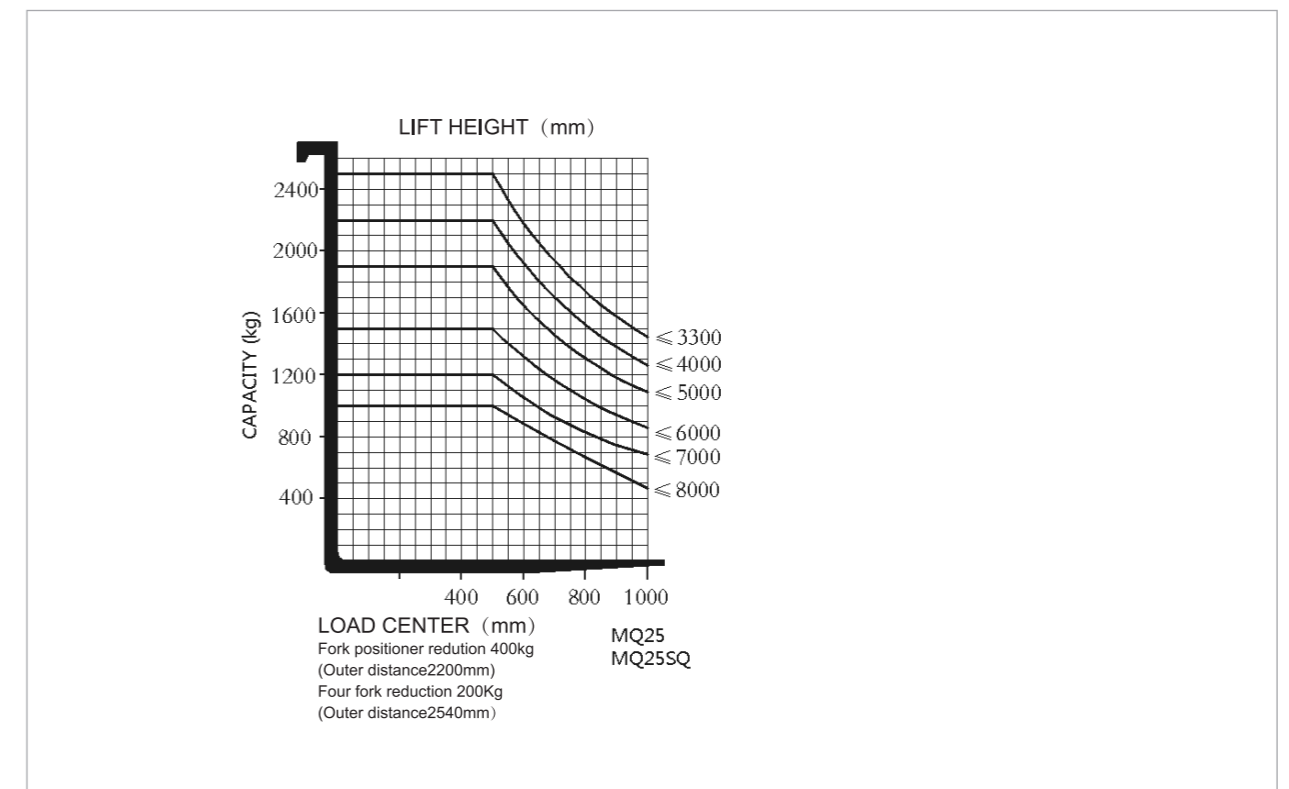


Standard				
1.1	Manufacturer	MIMA	MIMA	
1.2	Model	MQ2530	MQ2545SQ	
1.3	Power Type	Battery	Battery	
1.4	Operation Type	Stand-on	Stand-on	
1.5	Rated Capacity	Q(kg)	2500	2500
1.6	Load Center	C(mm)	500	500
1.7	Front Overhang	x(mm)	175	175
1.8	Wheelbase	y(mm)	1700	1700
Weight				
2.1	Service Weight(incl.battery)	kg	≈3700	≈3900
2.2	Battery Weight (±5%)	kg	665	665
Wheel				
3.1	Wheel Types	PU	PU	
3.2	Front wheel (Diameter×Width) x2pc	mm	φ267×114	φ267×114
3.3	Rear drive wheel (Diameter×Width)x 1pc	mm	φ380×165	φ380×165
3.4	Rear balance wheel (Diameter×Width)x 2pc	mm	φ204×76	φ204×76
3.5	Wheel tread,front	b3(mm)	1304	1304
3.6	Wheel tread,rear	b4(mm)	726	726
Size				
4.1	Fork Tilt front/rear	α/β(°)	3/5	2/6
4.2	Lift height	h1(mm)	3000	4500
4.3	Free lift height with load backrest	h2(mm)	80	1320
4.4	Mast closed height	h3(mm)	2082	2292
4.5	Mast extended height with load-backrest	h4(mm)	3960	5460
4.6	Overhead guard height	h5(mm)	2300	2300
4.7	Height from overhead guard to driving board	h6(mm)	/	/
4.8	Driving board height	h8(mm)	350	350
4.9	Ground clearance	h7(mm)	80	80
4.10	Load backrest height	h9(mm)	970	970
4.11	Leg height	h10(mm)	405	405
4.12	Overall length(incl.forks)	l1/l2(mm)	2250/2080	2300/2086
4.13	Reach stroke	l3(mm)	783	733
4.14	Overall width	b1(mm)	1595	1595
4.15	Fork size	l/e/s(mm)	920×122×40	920×122×40
4.16	Body tail width	b2(mm)	1190	1190
4.17	Fork outside width	b5(mm)	244~772	244~772
4.18	Inner leg width	b6(mm)	892	892
4.19	Fork carriage width	b7(mm)	1088	1088
4.20	Diameter of no-load rotation in situ	Wk(mm)	1975	1975
Function				
5.1	Driving speed(load/unload)	km/h	7.0~9.0	7.0~9.0
5.2	Lifting speed(load/unload)	mm/s	240/320	220/300
5.3	Lowering speed(load/unload)	mm/s	340/290	310/260
5.4	Straight driving max.gradeability,load/unload(S2-5min)	%(tanθ)	10	10
5.5	Side driving max.gradeability,load/unload(S2-5min)	%(tanθ)	5	5
5.6	Steering system	EPS	EPS	EPS
5.7	Drive wheel display	LED Screen	LED Screen	LED Screen
5.8	Brake type	Electromagnetic	Electromagnetic	Electromagnetic
Drive				
6.1	Drive motor type	AC	AC	
6.2	Drive motor(S2-60min)	kw	5.5	5.5
6.3	Lifting motor type	AC	AC	
6.4	Lifting motor(S3-15%)	kw	8.6	8.6
6.5	Battery voltage/capacity	V/Ah	48/400	48/400
Other				
7.1	Battery change type	Side pull	Side pull	
Option				
8.1	Video display	Mobile camera	Mobile camera	
8.2	Fork positioner	Customized	Customized	
8.3	Super wide fork carriage and four fork	Customized	Customized	

2D View



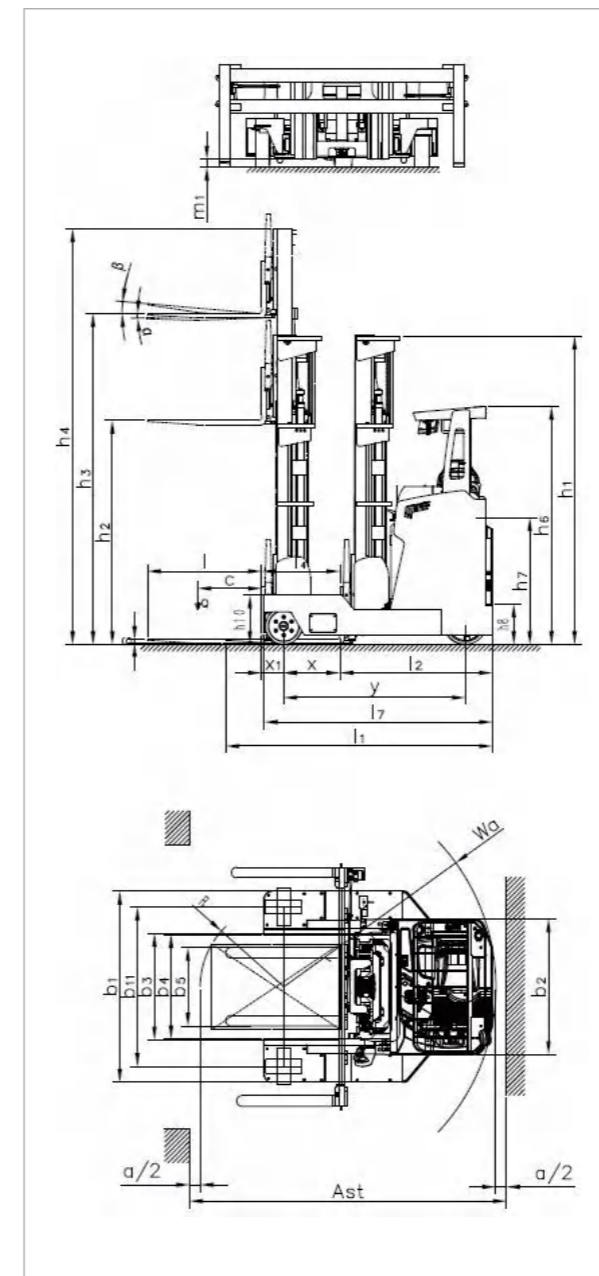
Load Chart



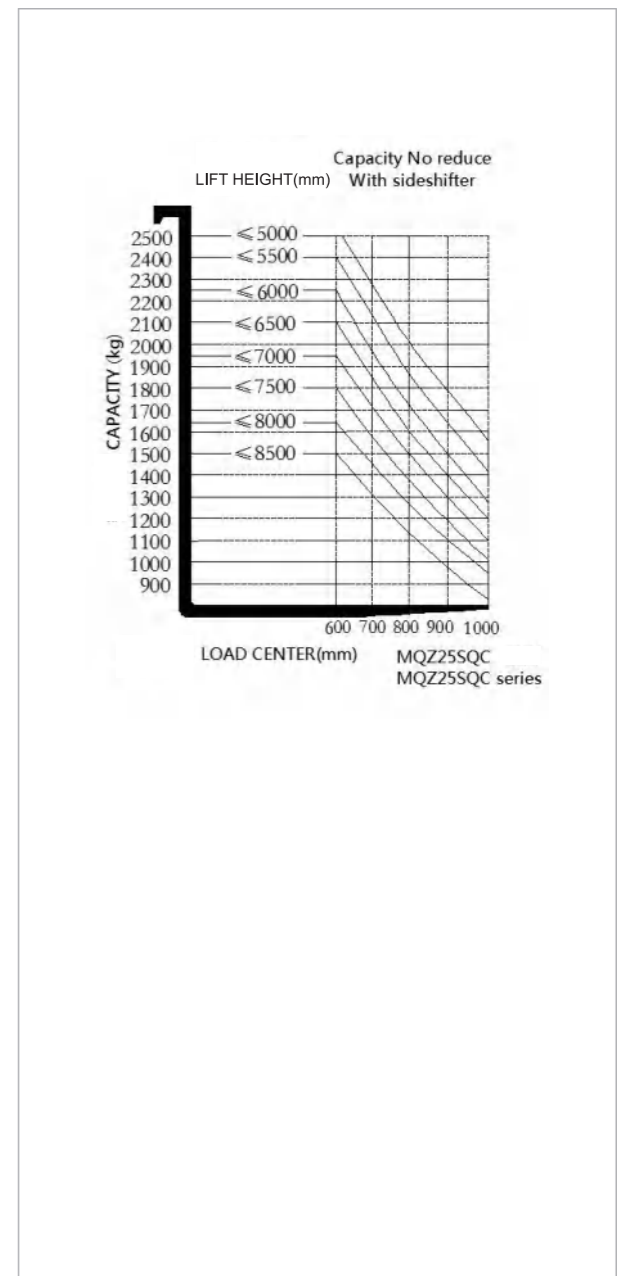
Standard		
1.1	Manufacturer	MIMA
1.2	Model	MQZ25SQ
1.3	Power Type	Battery
1.4	Operation Type	Seated
1.5	Rated Capacity	Q(kg) 2500
1.6	Load Center	C(mm) 600
1.7	Distance from center of front wheel to fork face	x(mm) 492
1.8	Front Overhang	x1(mm) 246
1.9	Wheelbase	y(mm) 1700
Weight		
2.1	Service Weight(incl.battery)	kg 5150
Wheel		
3.1	Wheel Types	PU
3.2	Load Wheel	mm $\phi 343 \times 130$
3.3	Drive wheel	mm $\phi 400 \times 160$
3.4	Number of wheels, front/rear(x=drive wheel)	2/1X
3.5	Wheel tread,load side	b11(mm) 1550
Size		
4.1	Fork Tilt front/rear	$\alpha/\beta(^{\circ})$ 1/5
4.2	Mast closed height	h1(mm) 3829
4.3	Free lift height	h2(mm) 2866
4.4	Lift height	h3(mm) 8500
4.5	Mast extended height with load-backrest	h4(mm) 9464
4.6	Overhead guard height	h6(mm) 2245
4.7	Seat height	h7(mm) 1186
4.8	First stage height	h8(mm) 390
4.9	Leg height	h10(mm) 456
4.10	Overall length	l1(mm) 2384
4.11	Length from tail to fork face	l2(mm) 1464
4.12	Overall length	b1/b2(mm) 1790/1270
4.13	Fork size	l/e/s(mm) 920×100×45
4.14	Fork carriage width	b3(mm) 2300
4.15	Fork outside width	b5(mm) 400-2240
4.16	Inner width of Legs	b4(mm) 977
4.17	Reach distance	l4(mm) 740
4.18	Mast clearance	m1(mm) 75
4.19	Diameter of no-load rotation in situ	Wk(mm) 2350
Function		
5.1	Driving speed(load/unload)	km/h 8.0/10
5.2	Lifting speed(load/unload)	mm/s 260/330
5.3	Lowering speed(load/unload)	mm/s 300/250
5.4	Max gradeability load/unload(S2-5min)	%(tan θ) 10
5.5	Brake type	Electromagnetic
Drive		
6.1	Driving motor(S2-60min)	kw 8
6.2	Lifting motor(S3-15%)	kw 15
6.3	Battery voltage/capacity	V/Ah 48/560
6.4	Battery weight	kg 921
Other		
7.1	Drive control method	AC

Mast specification										
Triplex Full Free Mast										
Model	MQZ	25SQ-45	25SQ-50	25SQ-55	25SQ-60	25SQ-65	25SQ-70	25SQ-72	25SQ-75	25SQ-80
Lift height	h3(mm)	4500	5000	5500	6000	6500	7000	7200	7500	8000
Mast extended height with load backrest	h4(mm)	5464	5964	6464	6964	7464	7964	8164	8464	8964
Mast closed height	h1(mm)	2395	2562	2728	2895	3062	3228	3295	3395	3662
Free lift height	h2(mm)	1434	1600	1768	1934	2100	2268	2334	2434	2700
Triplex Full Free Mast										
Model	MQZ	25SQ-85								
Lift height	h3(mm)	8500								
Mast extended height with load backrest	h4(mm)	9464								
Mast closed height	h1(mm)	3829								
Free lift height	h2(mm)	2866								

2D View

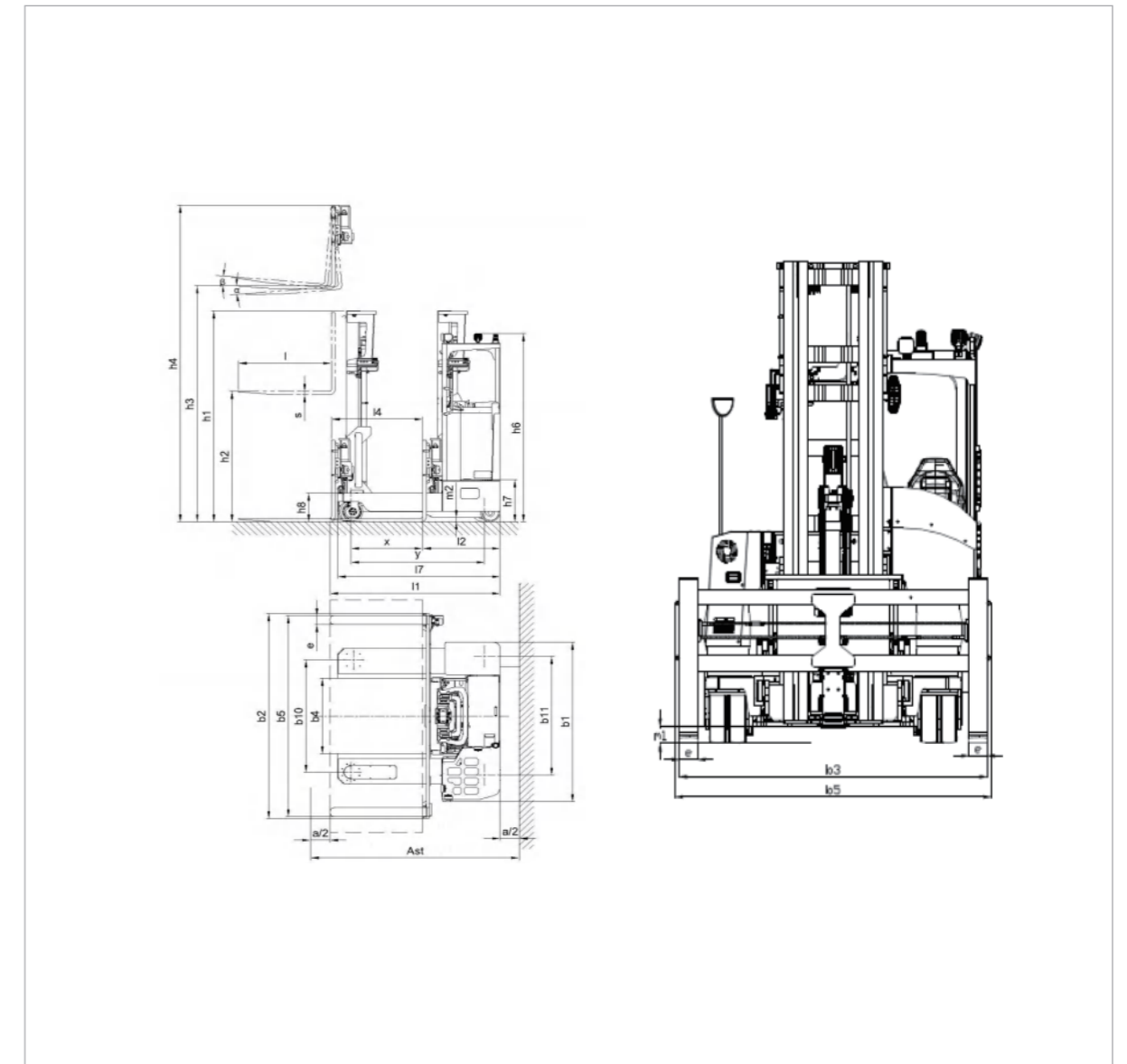


Load Chart

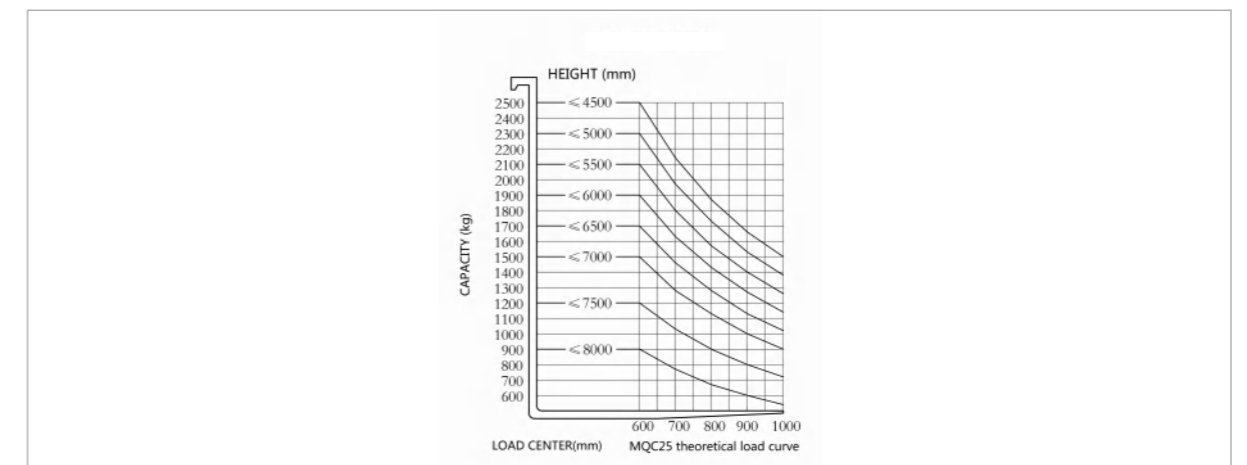


Standard			
1.1	Manufacturer	MIMA	
1.2	Model	MQC25	
1.3	Power Type	Battery	
1.4	Operation Type	Seated	
1.5	Rated Capacity	Q(kg)	2500
1.6	Load Center	C(mm)	500
1.7	Front Overhang	x(mm)	230
1.8	Wheelbase	y(mm)	1560
Weight			
2.1	Service Weight(incl.battery)	kg	5385①
Wheel			
3.1	Wheel Types	Solid rubber tyre	
3.2	Front wheel	12×4.5/φ305×114	
3.3	Rear wheel	13.5×5.5/φ343×140	
3.4	Number of wheels,front/rear(x=drive wheel)	4/2X	
3.5	Wheel tread,drive	b10 (mm)	1320
3.6	Wheel tread,load	b11 (mm)	1442
Size			
4.1	Mast/Fork Tilt front/rear	$\alpha/\beta(^{\circ})$	2/4
4.2	Mast closed height	h1(mm)	2970
4.3	Free lift height	h2(mm)	1915
4.4	Lift height	h3(mm)	6000
4.5	Mast extended height with load-backrest	h4(mm)	7040
4.6	Overhead guard height	h6(mm)	2550 /2430
4.7	Driving board height	h7(mm)	730
4.8	Leg height	h8(mm)	410
4.9	Overall length	l1 (mm)	2300
4.10	Overall width	b1/b2 (mm)	1850/2160
4.11	Fork size	s / e / l (mm)	45/125/1070
4.12	Fork outside width	b3 (mm)	550~2100
4.13	Inner width of legs	b4 (mm)	950
4.14	Reach stroke	l4 (mm)	900
4.15	Mast ground clearance	m1 (mm)	100
Function			
5.1	Driving speed load/unload	km/h	8-9
5.2	Lifting speed load/unload	km/h	200/300
5.3	Lowering speed load/unload		300/220
5.4	Max gradeability of load /unload	%($\tan\theta$)	8/10
5.5	Brake Type		Electromagnetic
Drive			
6.1	Driving Motor,S2=60	kw	6.5AC
6.2	Lifting motor,S3=15%	kw	12.5AC
6.3	Battery voltage/capacity	V/Ah	48/560
6.4	Battery weight	kg	810
6.5	Steering system		EPS
Other			
7.1	Battery change type		Hoisting

2D View

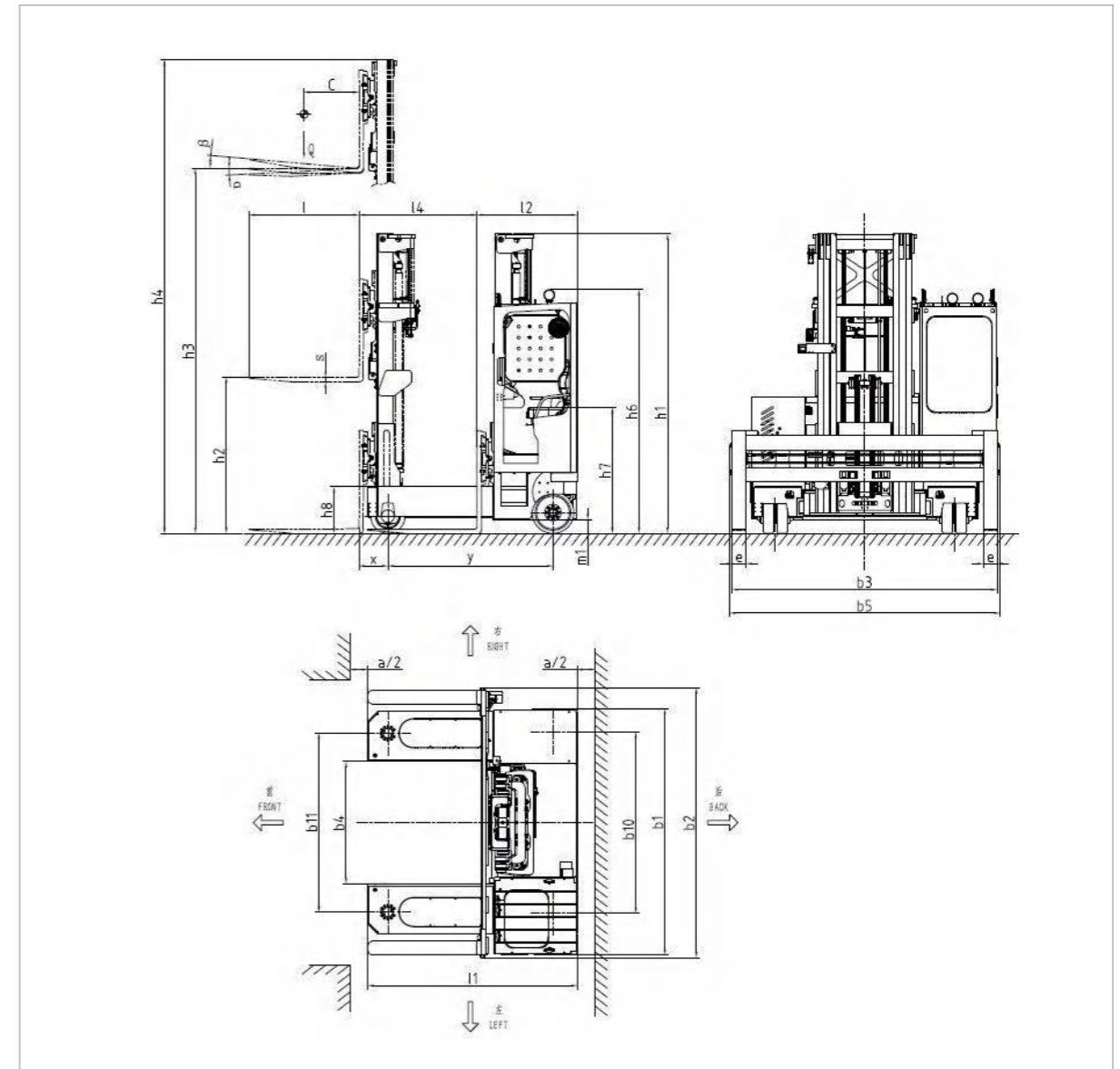


Load Chart

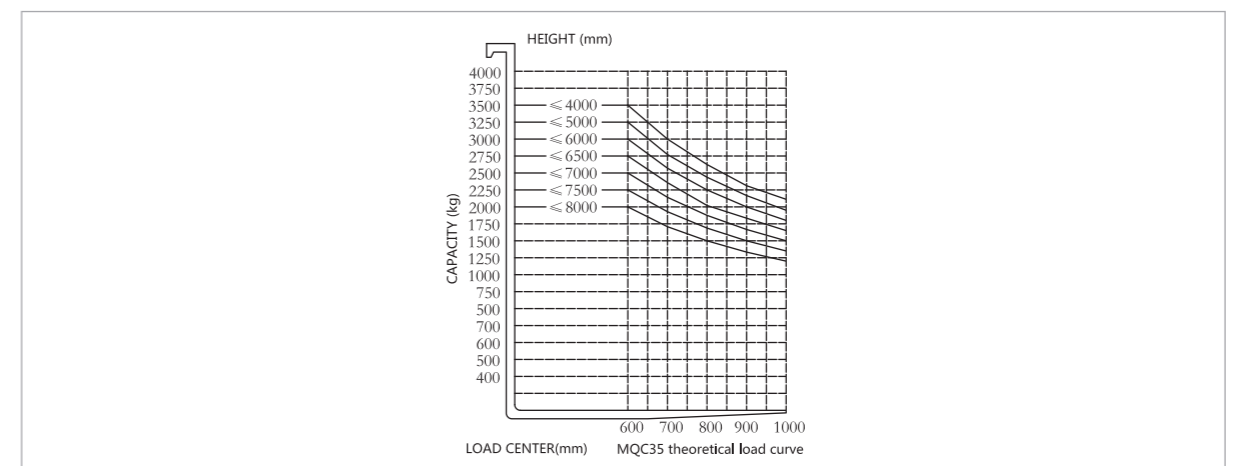


Standard			
1.1	Brand	MIMA	
1.2	Model	MQC35	
1.3	Nameplate	MQC	
1.4	Power type	Battery	
1.5	Operation type	Seated	
1.6	Rated capacity	Q (kg)	3500
1.7	Load center	c (mm)	600
1.8	Front overhand	x (mm)	325
1.9	Wheelbase	y (mm)	1800
Weight			
2.1	Service weight (with battery)	kg	6370①
Wheel			
3.1	Wheel type	Solid rubber tyre	
3.2	Load wheel size	14×5/φ356×127	
3.3	Driving wheel size	16×7/φ406×178	
3.4	Wheel number Front/Back(X=driven)	4/2X	
3.5	Wheel tread,load	b11 (mm)	1712
3.6	Wheel tread,drive	b10 (mm)	1760
Size			
4.1	Mast/Fork tilt range,Front/Rear	α/β(°)	2/4
4.2	Height of mast closed	h1(mm)	3043
4.3	Free lifting height	h2(mm)	1958
4.4	Lifting height	h3(mm)	6000
4.5	Mast extended height	h4(mm)	7135
4.6	Cab overall height (with/without light)	h6(mm)	2674/2574
4.7	Seat height	h7(mm)	1365
4.8	Leg height	h8(mm)	475
4.9	Overall length	l1 (mm)	2300
4.10	Overall width	b1/b2 (mm)	2435/2860
4.11	Fork size	s / e / l (mm)	50/150/1200
4.12	Fork outside width	b5 (mm)	610~2800
4.13	Inner leg width	b4 (mm)	1150
4.14	Reach stroke	l4 (mm)	1300
4.15	Ground clearance, at the center of the wheelbase	m1 (mm)	124
Function			
5.1	Driving speed when going straight, (load/unload)	km/h	7~8
5.2	Driving speed when driving sideways, (load/unload)	km/h	6~7
5.3	Lifting speed (load/unload)	mm/s	150/250
5.4	lowering speed (load/unload)	mm/s	195/160
5.5	Brake type	Electromagnetic	
Drive			
6.1	Drive motor power (S2-60min)	kw	8AC
6.2	Lift motor power (S3-15%)	kw	15AC
6.3	Lead acid battery, voltage/capacity	V/Ah	48/560
6.4	Battery weight	kg	910
Other			
7.1	Battery change type	Hoist	

2D View



Load Chart



Standard

1.1	Brand	MIMA	
1.2	Model	MQC45	
1.3	Power type	Battery	
1.4	Operation type	Seated	
1.5	Rated capacity	Q (kg)	4500
1.6	Load center	c (mm)	600
1.7	Front overhand	x (mm)	330
1.8	Wheelbase	y (mm)	1800

Weight

2.1	Service weight (with battery)	kg	7650
2.2	Axle load at full load, drive side/load side	kg	6620/5630
2.3	Axle load with no load, drive side/load side	kg	5820/1930

Wheel

3.1	Wheel type	Solid rubber tyre	
3.2	Load wheel size	15×5-11.25/φ381×127	
3.3	Driving wheel size	18×9-12.125/φ457×229	
3.4	Wheel number Front/Back(X=driven)	4/2X	
3.5	Wheel tread,drive	b10 (mm)	2050
3.6	Wheel tread,load	b11 (mm)	1964

Size

4.1	Mast/Fork tilt range,Front/Rear	$\alpha/\beta(^{\circ})$	2/4
4.2	Overhead guard height	h6(mm)	2550
4.3	Seat height	h7 (mm)	1375
4.4	Leg height	h8 (mm)	500
4.5	Overall length	l1 (mm)	2300
4.6	Length from tail to fork face	l2 (mm)	1100
4.7	Overall width	b1/b2 (mm)	2439/2745
4.8	Fork size	s / e / l (mm)	50/150/1200
4.9	Fork outside width	b5 (mm)	600~2900
4.10	Inner leg width	b4 (mm)	1340
4.11	Ground clearance, at the center of the wheelbase	m2 (mm)	150
4.12	Aisle width when running sideways 1000×6000mm cargo c=500mm	Ast (mm)	2900
4.13	Body to support leg length	l7 (mm)	2300

Function

5.1	Side Driving speed, full/unladen	km/h	7-8
5.2	Straight Driving speed, full/unloaded	km/h	6-7
5.3	Climbing ability load/unload	%	8/8
5.4	Brake type		Electromagnetic

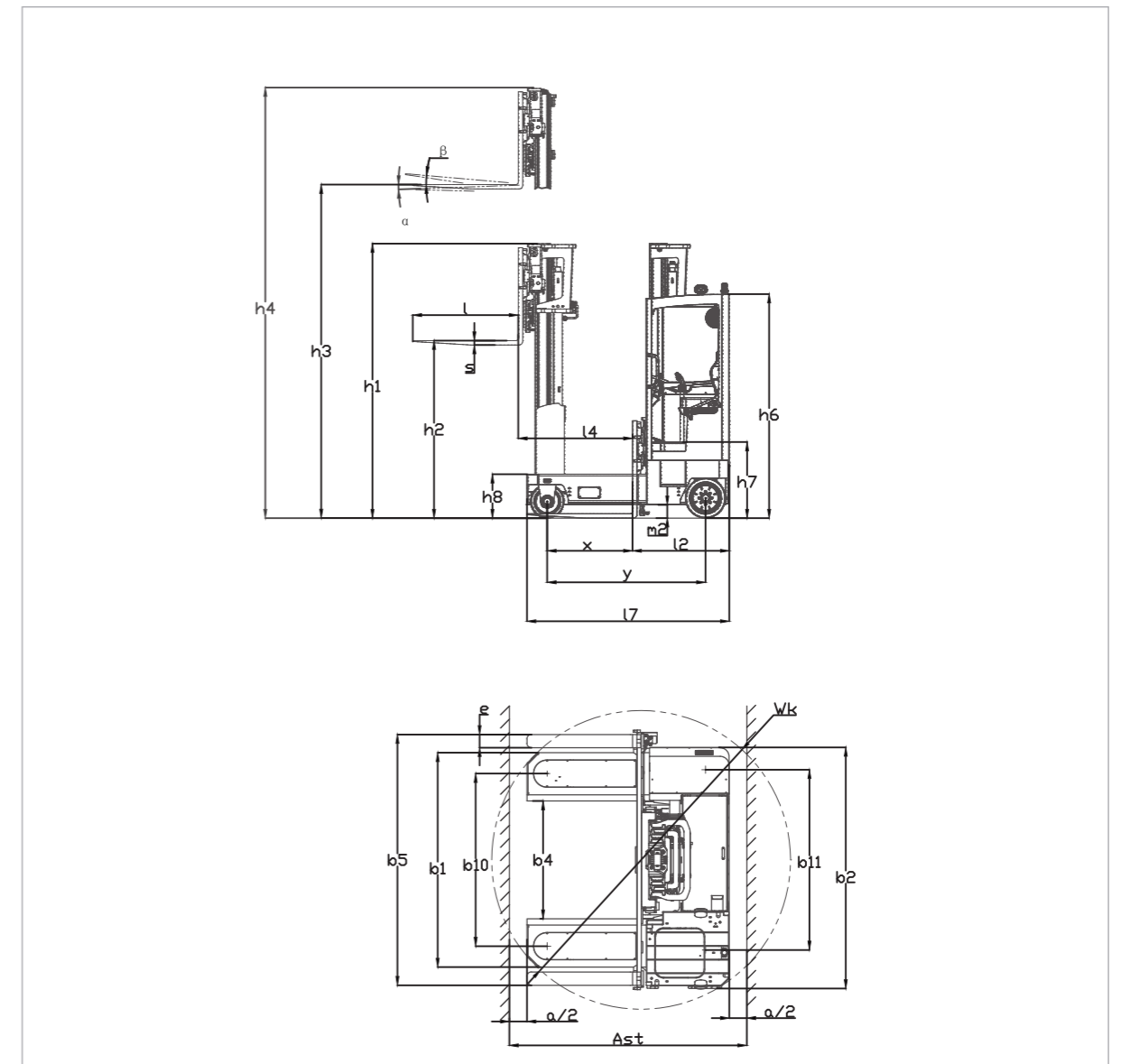
Drive

6.1	Drive motor power (S2-60min)	kw	2×7
6.2	Lift motor power (S3-15%)	kw	21
6.3	Lead acid battery, voltage/capacity	V/Ah	80/500

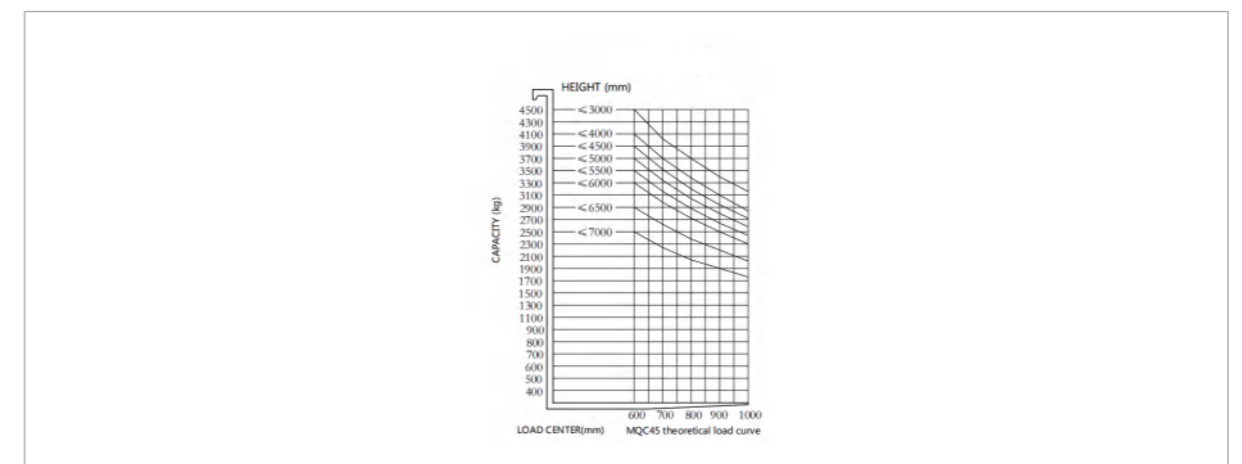
Other

7.1	Drive control type		AC
7.2	Driver's ear noise level	dB(A)	75

2D View



Load Chart



Standard			
1.1	Brand	MIMA	
1.2	Model	MQB30	
1.3	Nameplate	TFC	
1.4	Power type	Battery	
1.5	Operation type	Seated	
1.6	Rated capacity	Q (kg)	3000
1.7	Load center	c (mm)	600
1.8	Distance between front wheel and fork	x (mm)	930
1.9	Wheelbase	y (mm)	1730

Weight			
2.1	Service weight (with battery)	kg	5950①

Wheel			
3.1	Wheel type,Front/Back		PU/Solid rubber tyre
3.2	Load wheel size	mm	φ254×65/φ285×100
3.3	Driving wheel size	mm	φ381×203
3.4	Additional wheels	mm	φ254×65
3.5	Wheel number Front/Back(X=driven)		2+2/1X+2
3.6	Wheel tread,load	b10 (mm)	1563
3.7	Wheel tread,drive	b11 (mm)	1650

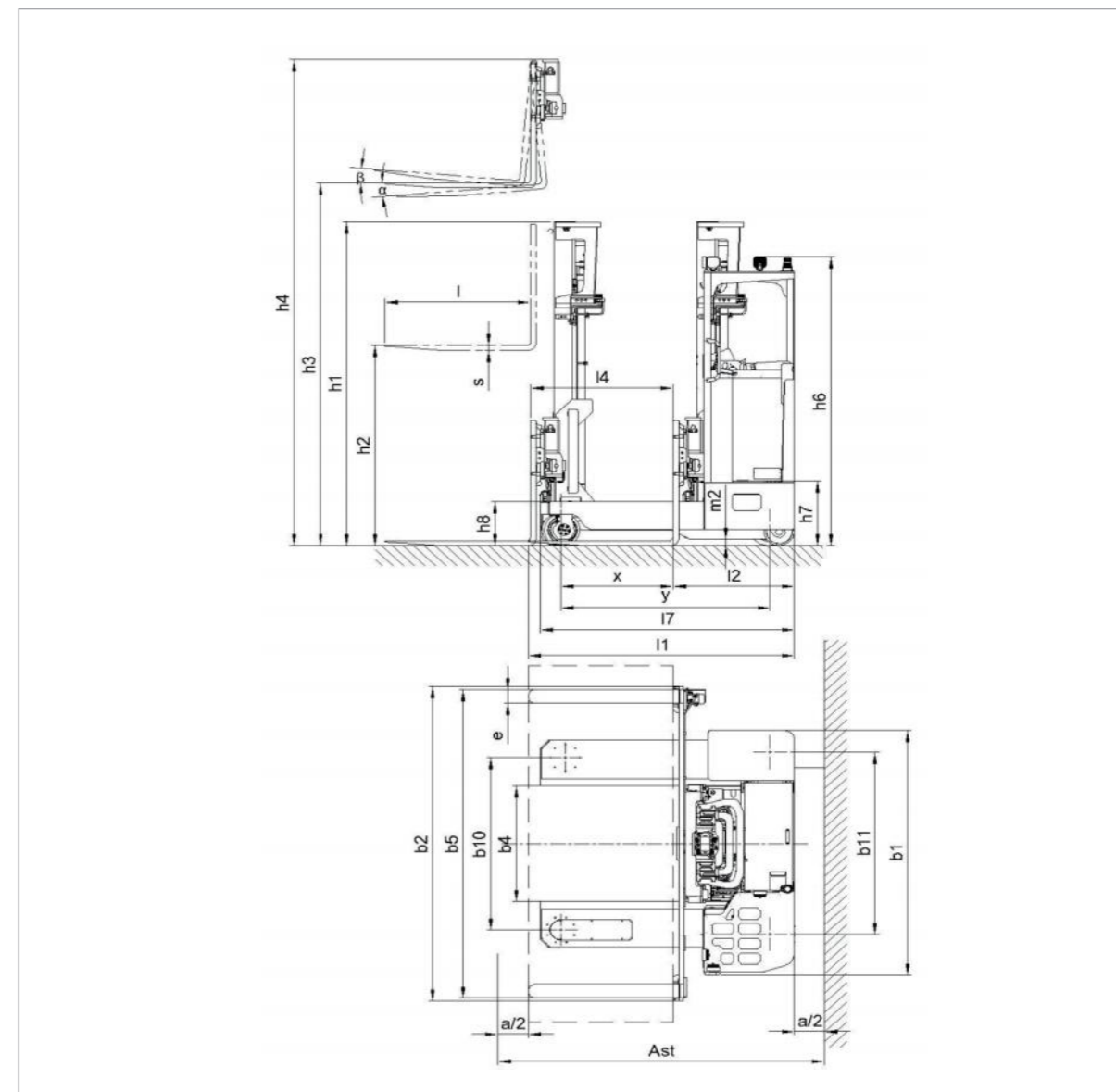
Size			
4.1	Mast/Fork tilt range,Front/Rear	α/β(°)	2/4
4.2	Height of mast closed	h1(mm)	3107
4.3	Free lifting height	h2(mm)	1987
4.4	Lifting height	h3(mm)	6000
4.5	Mast extended height	h4(mm)	7152
4.6	Overhead guard height	h6(mm)	2625②
4.7	Station height	h7(mm)	585
4.8	Leg height	h8(mm)	400
4.9	Overall length	l1 (mm)	2200
4.10	Length from tail to fork face	l2 (mm)	1000
4.11	Overall width	b1/b2 (mm)	2225/2860
4.12	Fork size	s / e / l (mm)	50/125/1200
4.13	Fork outside width	b5 (mm)	560~2800
4.14	Inner leg width	b4 (mm)	1050
4.15	Reach stroke	l4 (mm)	1180
4.16	Ground clearance, at the center of the wheelbase	m2 (mm)	60
4.17	Aisle width when running sideways 1200×6000mm cargo c=600mm	Ast (mm)	2700
4.18	Body to support leg length	l7 (mm)	2100

Function			
5.1	Driving speed when going straight, (load/unload)	km/h	5/6
5.2	Driving speed when driving sideways, (load/unload)	km/h	7/8
5.3	Lifting speed,(load/unload)	mm/s	180/300
5.4	Lowering speed, (load/unload)	mm/s	300/220
5.5	Climbing ability load/unload	%	8/8
5.6	Brake type		Electromagnetic

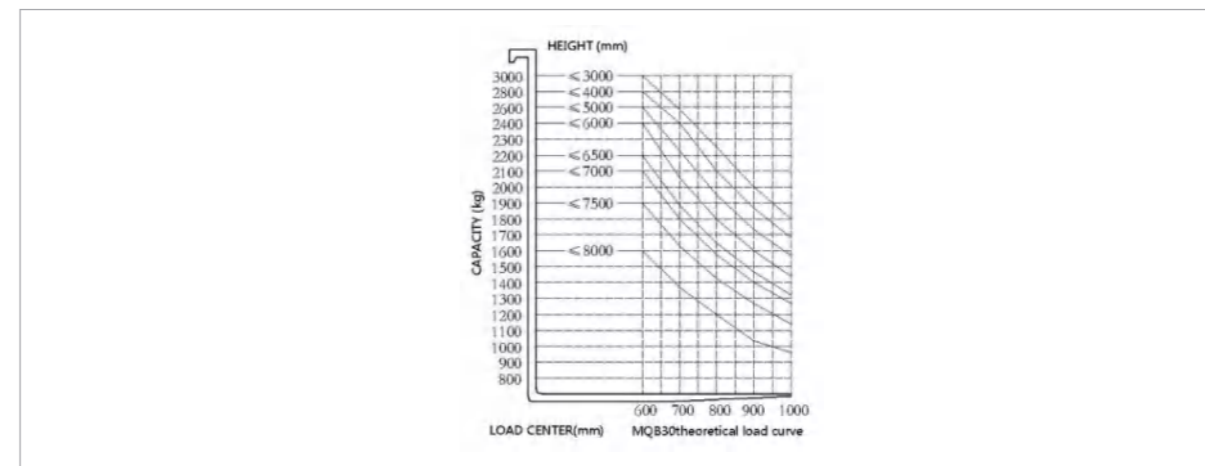
Drive			
6.1	Drive motor power (S2-60min)	kw	5.5
6.2	Lift motor power (S3-15%)	kw	12.8
6.3	Lead acid battery, voltage/capacity	V/Ah	48/560
6.4	Battery weight	kg	826

Other			
7.1	Drive control type		AC
7.2	Driver's ear noise level	dB(A)	70

2D View

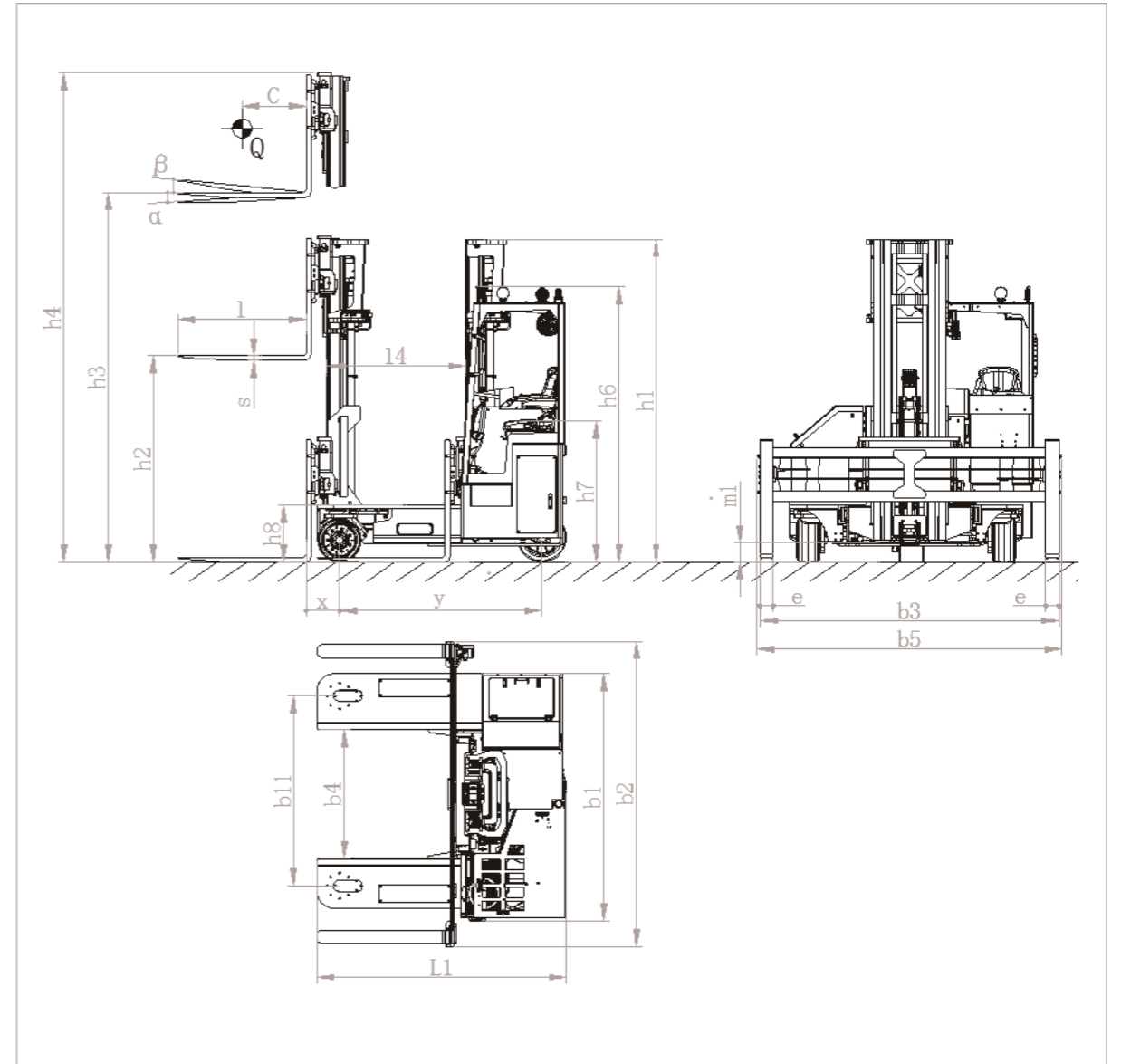


Load Chart

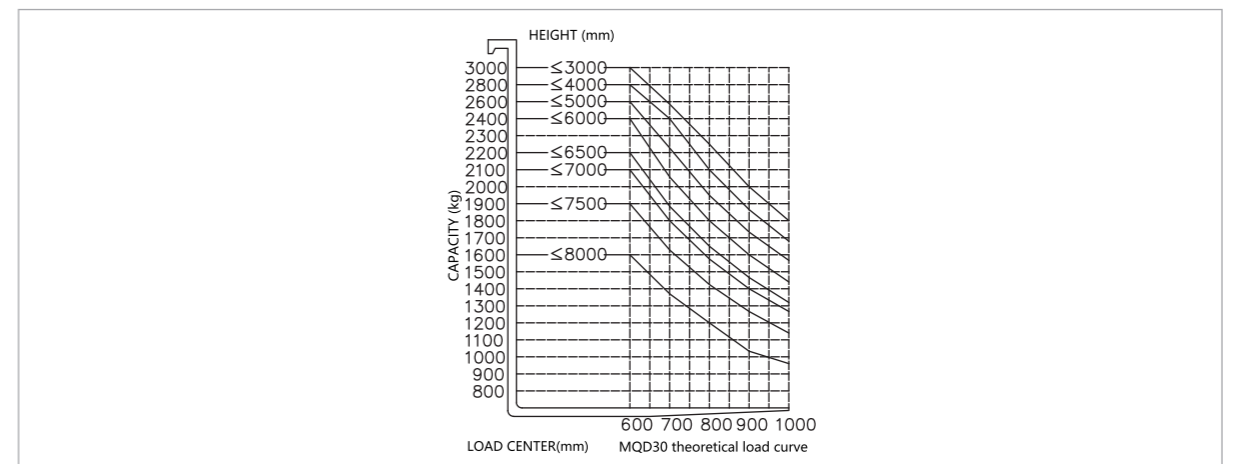


Standard		
1.1	Brand	MIMA
1.2	Model	MQC30D
1.3	Power type	Battery
1.4	Operation type	Seated
1.5	Rated capacity	Q (kg) 3000
1.6	Load center	c (mm) 600
1.7	Front overhand	x (mm) 312
1.8	Wheelbase	y (mm) 1895
Weight		
2.1	Service weight (with battery)	kg 5580
2.2	Alex loading,laden drive/load	kg 4680/3970
2.3	Alex loading,unladen drive/load	kg 3960/2590
Wheel		
3.1	Wheel type,drive/load Solid rubber tyre	Solid rubber tyre
3.2	Load wheel size	mm $\phi 405 \times 220$
3.3	Driving wheel size	mm $\phi 457 \times 229$
3.4	Wheel number Front/Back(X=driven)	2 / 1X
3.5	Wheel tread,drive	b10 (mm) 0
3.6	Wheel tread,load	b11 (mm) 1776
Size		
4.1	Mast/Fork tilt range,Front/Rear	$\alpha/\beta(^{\circ})$ 2/5
4.2	Height of mast closed	h1(mm) 3020
4.3	Free lifting height	h2(mm) 1884
4.4	Lifting height	h3(mm) 5500
4.5	Mast extended height	h4(mm) 6650
4.6	Cab height (with lights)	h6(mm) 2571
4.7	Seat height	h7(mm) 1310
4.8	Leg height	h8(mm) 530
4.9	Overall length(without guide wheel)	L1(mm) 2330
4.10	Length from tail to fork face	l2 (mm) 1000
4.11	Overall width	b1/b2 (mm) 2300/2860
4.12	Fork size	l/e/s(mm) 1200/125/45
4.13	Fork carriage width	b5(mm) 2860
4.14	Fork outside width	b3(mm) 560~2800
4.15	Inner leg width	b4(mm) 1200
4.16	Reach stroke	l4(mm) 1300
4.17	Ground clearance(without camera)	m1(mm) 150
Function		
5.1	Driving speed when going sideways, (load/unload)	km/h 8.0/9.0
5.2	Driving speed when driving straight, (load/unload)	km/h 5.0/5.0
5.3	Lifting speed,(load/unload)	mm/s 180/300
5.4	Lowering speed, (load/unload)	mm/s 300/220
5.5	Straight driving Max. gradeability(load/unload)(S2-5min)	%($\tan\theta$) 8/10
5.6	Side driving Max. gradeability(load/unload)(S2-5min)	%($\tan\theta$) 8/10
5.5	Brake type(front/rear)	Electromagnetic
Drive		
6.1	Drive motor power (S2-60min)	kw 9.1AC
6.2	Lift motor power (S3-15%)	kw 12.8AC
6.3	Lead acid battery, voltage/capacity	V/Ah 48/560
6.4	Battery weight	kg 900
Other		
7.1	Battery replacement	Hosit/Side pull

2D View



Load Chart





COMPANY INTRODUCTION

Hefei Banyitong Technology Development Co., Ltd., founded in 1994, is a high-tech enterprise specializing in the design and manufacture of electric storage forklifts and customized logistics equipment. Our company has won the People's Republic of China special equipment production license, ISO9001:2008, CE certification and so on.

With more than 20 years of continuous improvement, MIMA brand is based on the company's strong scientific research and innovation team, with the design concept of "safety, durability, comfort, low carbon (environmental protection)", to provide customers with 500KG-100T application solutions, storage equipment and related services. Through continuous technological innovation and accumulation of patents, our products have involved more than 50 varieties in 12 categories, such as electric pallet trucks, pallet stackers, reach trucks, counterbalanced forklifts, tow tractor, low-level and high-level order picker, VNA three-way forklifts, four-way and multi-directional forklifts, AGV forklift, unmanned aisle stackers and customized logistics equipment. MIMA brand products are widely used in medicine, food, chemical, electronics, machinery, furniture, logistics and other industries.

In order to serve users better and more comprehensively, our company has established a sales and service system that integrates consulting, planning and design, and comprehensive services. Now we have established offices directly

under the company and 68 agents and distribution service providers across the country. And set up professional sales service network and dealers in more than 60 overseas countries and regions. The broad marketing network and perfect pre-sale, in-sale and after-sale service system ensure that you can get the machine and the service from us.

MIMA promise of "Even if there is only one piece of equipment in the world, we will custom made it for you" has always been a work guide for employees. After more than 20 years of struggle, we have successfully provided various customized forklift logistics equipment solutions to various customers in different industries, which have been highly praised and recognized by our customers.

"Safety, quality, innovation, service" has been the consistent business philosophy of MIMA brand for more than 20 years. The industry prospect of "Min spac. And Max performance" is the driving force for the unremitting efforts and hard work of all MIMA employees. In the future, MIMA will stand in the east of the world with a more proud posture, and present it to customers with a more excellent design concept and comprehensive service system, so that customers can cooperate once and become friends for life!

Honor and Qualification

